

Economic Indicators of National Industrial Development and Logistics Program (NIDLP)



National Industrial
Development and
Logistics Program



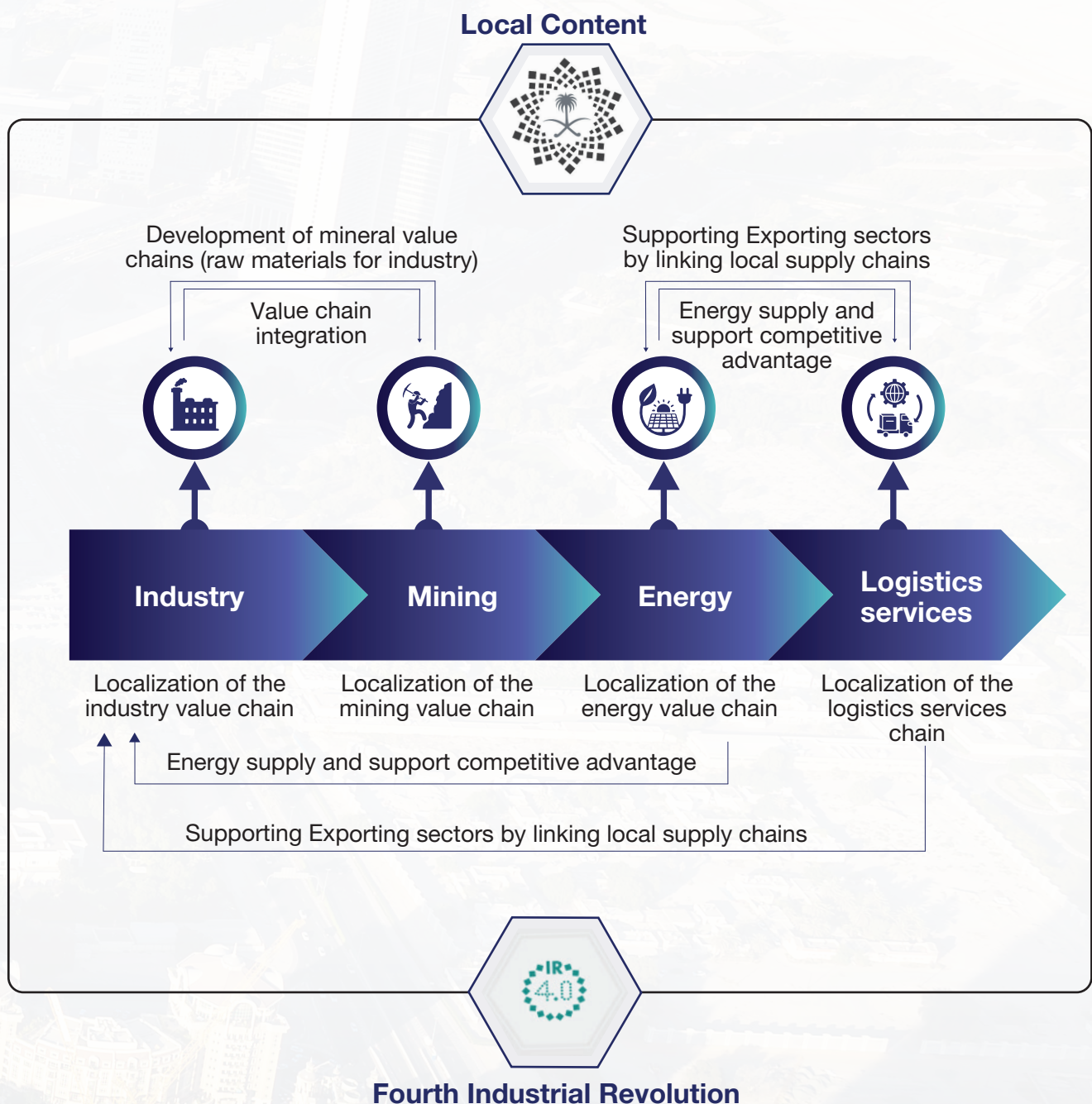
VISION رؤية
2030
المملكة العربية السعودية
KINGDOM OF SAUDI ARABIA

2025

NIDLP as Growth Catalyst:

The NIDLP, launched in 2019, integrates the strategic sectors of energy, mining, industry, and logistics to diversify Saudi Arabia's economy, enhance competitiveness, and attract investment. Anchored by local content and advanced technologies, it drives infrastructure upgrades, policy reforms, and private-sector participation to strengthen trade balance, innovation, and global connectivity.

NIDLP is strategically aligning core sectors to maximize cross-sector synergies and enable the execution of Vision 2030 objectives.



NON-OIL EXPORTS

▲ 13.2%

514
Billion
SAR

Non-oil exports saw a **13.2%** year-on-year increase in 2024, largely driven by strong growth in re-export activities, which reached **SAR 90 billion**, marking a record **42%** rise. Re-export, also known as entrepot trade, is a type of trade in which goods are imported and re-exported without significant processing in the importing country.

BREAKDOWN OF NON-OIL EXPORTS

207 Billion SAR
Service Exports

▲ 14%

217 Billion SAR
Goods Exports

▲ 4%

90 Billion SAR
Re-exports

▲ 42%

REAL GDP FOR NIDLP SECTORS' ACTIVITIES

39% Contribution to GDP

986
Billion
SAR

The program's target sectors contributed approximately **39%** to non-oil GDP in 2024. Notably, mining and quarrying, along with transportation and storage, each recorded a **5%** growth, while the manufacturing sector saw a **4%** increase over the year.

TOTAL NUMBER OF JOBS IN THE PROGRAM SECTORS' ACTIVITIES

▲ +508,000

2.433
Million
Workers

Employment across NIDLP program sectors exceeded **2.4 million in 2024**, marking an annual increase of over **508,000** workers. Notably, Saudi nationals accounted for more than **81,000** of these positions, highlighting continued progress in local workforce participation.



Energy Sector

Total renewable energy capacity for the year **2024** reached **20** gigawatts, including **3.7 GW** of new solar project agreements and **3.6 GW** of new commercial operations.



6.6 GW

Commercial operations began for several new solar projects in 2024, adding **3.6 GW** of capacity and bringing the Kingdom's total solar capacity to **6.6 GW**.



21.5 / Billion cubic feet per day

Gas processing capacity reached **21.5 billion** cubic feet per day in 2024.

Mining Sector

Mining sector grew by 5 percent in 2024, with the aim of contributing **SAR 176 billion** to GDP by 2030 and creating **219,000** jobs. Saudi Arabia ranked second globally for the quality of its mining license environment.



**9.4
Trillion
SAR**

The estimated value of the Kingdom's mineral resources reached **SAR 9.4 trillion**, significantly enhancing the sector's investment appeal. As a result, total investments rose to **SAR 1.5 billion** by the end of January **2024**.

**229
Per
sq.km**

Exploration spending reached **SAR 229** per sq. km

2,401

Number of valid mining licenses reached **2,401** in **2024**.

380%

Number of mining sites offered for competitive bidding also increased by **380** percent.



Industry Sector

Non-government investments in program sectors reached **SAR 665 billion**, while cumulative investments in industrial cities and special zones totaled **SAR 1.41 trillion**.

1,511 1,511 number of ready-built factories.

12,589 Total industrial facilities accumulate to **12,589** units.

198 Billion Riyal worth net loan credits acquired by **SIDF**.

299 Licensed companies in the military industries sector.

Logistics Sector

Like mining sector, logistics growth also rose by **5 percent**. A total of **1,056** logistics licenses were issued, and the number of re-export logistics centers expanded to 23 in 2024, up from just 2 in 2019



64% 64% of the port was utilized.

1.958 Million Number of transshipment increased up to **1.958 million**.

2 Hour Customs clearance time reduced to a flattering **2** hours.

7.5 Million 7.5 million containers were handled.

2025

CONTACT US

Contact Us

For further information, clarification and discussion concerning the contents, please contact

Asif Iqbal Malik

Partner – Strategic Consultancy

✉ : mai@insightss.co

Mohammad Owais Zubair

Sr. Manager – Strategic Consultancy

✉ : mzubair@insightss.co

☎ : +966 54 381 7390

Afifa Iqbal

Consultant – Strategic Consultancy

✉ : aiqbal@insightss.co

☎ : +966 57 360 2403

Wajeeha Salman

Consultant – Strategic Consultancy

✉ : wsalman@insightss.co

☎ : +966 56 839 9117

Insights

☎ : +966 53 963 3882

✉ : info@insightss.co

🌐 : www.insightss.co

Riyadh Office :

107 Legend Tower, King Fahd Road,
Riyadh – KSA.

Jeddah Office :

Royal Plaza, Prince Sultan Street,
Jeddah 23615 - KSA.